

Fibertex Nonwovens Czech  
Prumyslova 2179/20  
CZ-568 02 Svitavy  
CZECH REPUBLIC

Eurofins Product Testing A/S  
Smedeskovvej 38  
8464 Galten  
Denmark

CustomerSupport@eurofins.com  
www.eurofins.com/VOC-testing

## VOC EMISSION TEST REPORT


### Indoor Air Comfort GOLD<sup>®</sup>

1 March 2019

#### 1 Sample Information

Sample name	Fiberacoustic 450
Batch no.	Roll. 2519 021 12 181-01 – ME0164
Production date	21/01/2019
Product type	Acoustic membrane
Sample reception	23/01/2019

#### 2 Brief Evaluation of the Results

Regulation or protocol	Conclusion	Version of regulation or protocol
French VOC Regulation		Regulation of March and May 2011 (DEVL1101903D and DEVL1104875A)
French CMR components	Pass	Regulation of April and May 2009 (DEVP0908633A and DEVP0910046A)
AgBB/ABG	Pass	Anforderungen an bauliche Anlagen bezüglich des Gesundheitsschutzes (ABG), Entwurf 31.08.2017
Belgian Regulation	Pass	Royal decree of May 2015 (C-2014/24239)
Indoor Air Comfort <sup>®</sup>	Pass	Indoor Air Comfort 6.0 of February 2017
Indoor Air Comfort GOLD <sup>®</sup>	Pass	Indoor Air Comfort GOLD 6.0 of February 2017
EN 717-1 <sup>§</sup>	E1	2004
BREEAM International	Compliant	GN22 v2.3 (March 2018): BREEAM Recognised Schemes for VOC Emissions from Building Products
LEED v4 (outside U.S.)	Compliant	LEED v4 for Building Design and Construction (April, 2015)
BREEAM <sup>®</sup> NOR	Pass	BREEAM-NOR New Construction v1.1 (May 2017)

Full details based on the testing and direct comparison with limit values are available in the following pages



Malene Laugesen  
Analytical Service Manager



Rasmus Stengaard Christensen  
Analytical Service Manager, MSc in Chemistry

The results are only valid for the tested sample(s).

This report may only be copied or reprinted in its entirety, parts of it only with a written acceptance by Eurofins.

## Table of contents

<b>1</b>	<b>Sample Information</b>	<b>1</b>
<b>2</b>	<b>Brief Evaluation of the Results</b>	<b>1</b>
<b>3</b>	<b>Applied Test Methods</b>	<b>3</b>
3.1	General Test References	3
3.2	Specific Laboratory Sampling and Analyses	3
<b>4</b>	<b>Test Parameters, Sample Preparation and Deviations</b>	<b>4</b>
4.1	VOC Emission Chamber Test Parameters	4
4.2	Preparation of the Test Specimen	4
4.3	Picture of Sample	4
4.4	Deviations from Referenced Protocols and Regulations	5
<b>5</b>	<b>Results</b>	<b>6</b>
5.1	VOC Emission Test Results after 3 Days	6
5.2	VOC Emission Test Results after 28 Days	7
<b>6</b>	<b>Summary and Evaluation of the Results</b>	<b>9</b>
6.1	Comparison with Limit Values of the French VOC Regulation	9
6.2	Comparison with Limit Values of the CMR Components	9
6.3	Comparison with VOC Limit Values of AgBB/ABG	10
6.4	Comparison with Limit Values of the Belgian Regulation	10
6.5	Comparison with Limit Values of EN 717-1 <sup>s</sup>	10
6.6	Comparison with Limit Values of Indoor Air Comfort <sup>®</sup>	11
6.7	Comparison with Limit Values of Indoor Air Comfort Gold <sup>®</sup>	11
6.8	Comparison with BREEAM <sup>®</sup> NOR Limit Values	12
6.9	Comparison with Limit Values of LEED v4	12
<b>7</b>	<b>Appendices</b>	<b>13</b>
7.1	Chromatogram of VOC Emissions after 3 Days	13
7.2	Chromatogram of VOC Emissions after 28 Days	13
7.3	Sampling Report	14
7.4	How to Understand the Results	15
7.5	Applied LCI and NIK Values	16
7.6	Description of VOC Emission Test	17
7.7	Quality Assurance	19
7.8	Accreditation	19
7.9	Uncertainty of the Test Method	19

### 3 Applied Test Methods

#### 3.1 General Test References

Regulation, protocol or standard	Version	Reporting limit VOC [ $\mu\text{g}/\text{m}^3$ ]	Calculation of TVOC	Combined uncertainty <sup>a</sup> [RSD(%)]
EN 16516	October 2017	5	Toluene equivalents	22%
ISO 16000 -3 -6 -9 -11	2006-2011 depending on part	2	Toluene equivalents	22%
ASTM D5116-10	2010	-	-	-
Specifications Indoor Air Comfort Gold	6.0 of February 2017	5	Toluene equivalents	22%
French VOC Classes	Regulation of March and May 2011 (DEVL1101903D and DEVL1104875A)	2	Toluene equivalents	22%
French CMR	Regulation of April and May 2009 (DEVP0908633A and DEVP0910046A)	1	Toluene equivalents	22%
AgBB	August 2018	5	Compound Specific	22%
AgBB/ABG	31.08.2017	5	Compound Specific	22%
Belgian VOC	Royal decree of May 2015 (C - 2014 / 24239)	5	Toluene equivalents	22%
BREEAM <sup>®</sup> NOR	BREEAM-NOR New Construction v1.1 (May 2017)	5	Toluene equivalents	22%
EN 717-1 <sup>§</sup>	2004	-	(Formaldehyde only)	22%
LEED v4	April 2015	-	-	-

#### 3.2 Specific Laboratory Sampling and Analyses

Procedure	External Method	Internal SOP	Quantification limit / sampling volume	Analytical principle	Uncertainty <sup>a</sup> [RSD(%)]
Sample preparation	ISO 16000-11:2006, EN16402:2013, CDPH, AgBB, EMICODE	71M549810	-	-	-
Emission chamber testing	ISO 16000-9:2006, EN 16516:2017	71M549811	-	Chamber and air control	-
Sampling of VOC	ISO 16000-6:2011, EN 16516:2017	71M549812	5 L	Tenax TA	-
Analysis of VOC	ISO 16000-6:2011, EN 16516:2017	71M542808B	1 $\mu\text{g}/\text{m}^3$	ATD-GC/MS	10%
Sampling of aldehydes	ISO 16000-3:2011, EN 16516:2017	71M549812	35 L	DNPH	-
Analysis of aldehydes	ISO 16000-3:2011, EN 717-1, EN 16516:2017	71M548400	3-6 $\mu\text{g}/\text{m}^3$	HPLC-UV	10%
Sampling of phthalates*	ISO 16000-33:2017, MEL-09:2003	71M546060	60 L	XAD-2	-
Analysis of phthalates*	ISO 16000-33:2017	71M546060	0.6 $\mu\text{g}/\text{m}^3$	GC/MS	10%

The results are only valid for the tested sample(s).

This report may only be copied or reprinted in its entirety, parts of it only with a written acceptance by Eurofins.

## 4 Test Parameters, Sample Preparation and Deviations

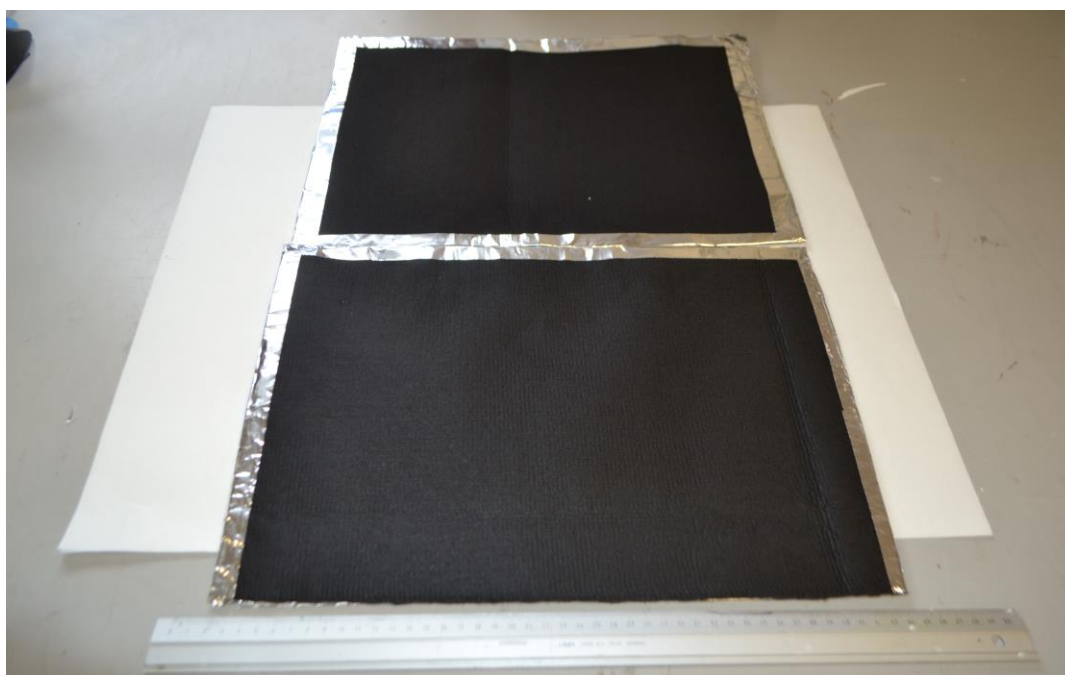
### 4.1 VOC Emission Chamber Test Parameters

Parameter	Value	Parameter	Value
Chamber volume, V[L]	119	Preconditioning period	-
Air Change rate, $n[h^{-1}]$	0.5	Test period	25/01/2019 - 22/02/2019
Relative humidity of supply air, RH [%]	$50 \pm 3$	Area specific ventilation rate, q [m/h or m <sup>3</sup> /m <sup>2</sup> /h]	0.5
Temperature of supply air, T [°C]	$23 \pm 1$	Loading factor [m <sup>2</sup> /m <sup>3</sup> ]	1.0
		Test scenario	Wall

### 4.2 Preparation of the Test Specimen

To allow emission from both front and back of the product two different test specimens were prepared. One test specimen had the back covered by aluminium foil and tape. Another test specimen had the front covered by aluminium foil and tape. One factory made edge was left open on one of the test specimens; otherwise, the remaining edges were covered with aluminium foil and tape.

### 4.3 Picture of Sample



#### 4.4 Deviations from Referenced Protocols and Regulations

No deviations from the referenced test methods were observed except the general deviations.

##### 4.4.1 General Deviations

Method	Deviation details	Impact on results or correction
EN 717-1 <sup>§</sup>	Sampling flow on DNPH was 330 mL/min. The RH% in the supply air to the chamber was $50 \pm 3\%$ and not $45 \pm 3\%$ during the test. The temperature was $23 \pm 1^\circ\text{C}$ and not $23 \pm 0.5^\circ\text{C}$ . The air change rate was 0.5/h and not 1/h. The sample was tested without open edges unless otherwise stated under sample preparation.	Formaldehyde concentration can be expected to be slightly overestimated compared to EN 717-1 due to the higher RH% and lower air change rate in ISO 16000-9. The E1 limit value of $120 \mu\text{g}/\text{m}^3$ has been recalculated to $\text{SER}_A$ of $120 \mu\text{g}/\text{m}^2/\text{h}$ and compared with the detected $\text{SER}_A$ (in accordance with conclusion presented in CEN TC351 WG2 N174).

## 5 Results

### 5.1 VOC Emission Test Results after 3 Days

	CAS No.	Retention time [min]	ID-Cat	Specific Conc. [µg/m³]	Toluene eq. [µg/m³]	Specific SER [µg/(m²·h)]	R <sub>D</sub>	R <sub>B</sub>
<b>VOC with NIK/LCI</b>								
TXIB *	6846-50-0	15.21	1	5.6	6.2	2.8	0.012	0.012
<b>VOC without NIK/LCI</b>								
Not identified *		11.69	4	9.7	9.7	4.8		
<b>Sum of VOC without NIK/LCI</b>				9.7	9.7	4.8		
<b>VVOC compounds</b>								
None determined								
<b>TVOC</b>								
				< 5	< 5	< 3		
<b>SVOC compounds</b>								
Not identified *		15.65	4	10	10	5.0		
<b>TSVOC</b>								
				10	10	5.0		
<b>Carcinogens</b>								
<b>Total carcinogens</b>								
				< 1	< 1	< 1		
<b>Aldehydes</b>								
Formaldehyde	50-00-0		1	< 3		< 2		
Acetaldehyde	75-07-0		1	< 3		< 2		
Propionaldehyde	123-38-6		1	< 3		< 2		
Butyraldehyde	123-72-8		1	< 3		< 2		
2-butenal	123-73-9		1	< 5		< 3		
Glutaraldehyde	111-30-8		1	< 5		< 3		
<b>R-values</b>							0.012	0.012
<b>TVOC</b>								
				15	16	7.6		

## 5.2 VOC Emission Test Results after 28 Days

	CAS No.	Retention time [min]	ID-Cat	Specific Conc. [µg/m³]	Toluene eq. [µg/m³]	Specific SER [µg/(m²·h)]	R <sub>D</sub>	R <sub>B</sub>
<b>VOC with NIK/LCI</b>								
None determined								
<b>VOC without NIK/LCI</b>								
None determined								
<b>Sum of VOC without NIK/LCI</b>				< 5	< 5	< 3		
<b>VVOC compounds</b>								
None determined								
<b>TVVOC</b>				< 5	< 5	< 3		
<b>SVOC compounds</b>								
None determined								
<b>TSVOC</b>				< 5	< 5	< 3		
<b>Carcinogens</b>								
<b>Total carcinogens</b>				< 1	< 1	< 1		
<b>CMR substances</b>								
Benzene	71-43-2		1	< 1		< 1		
Trichloroethylene	79-01-6		1	< 1		< 1		
Dibutylphthalate (DBP)*	84-74-2		1	< 1		< 1		
Diethylhexylphthalate (DEHP)*	117-81-7		1	< 1		< 1		
<b>Aldehydes</b>								
Formaldehyde	50-00-0		1	< 3		< 2		
Acetaldehyde	75-07-0		1	< 3		< 2		
Propionaldehyde	123-38-6		1	< 3		< 2		
Butyraldehyde	123-72-8		1	< 3		< 2		
2-butenal	123-73-9		1	< 5		< 3		
Glutaraldehyde	111-30-8		1	< 5		< 3		
<b>R-values</b>							0	0
<b>TVOC</b>				< 5	< 5	< 3		
TVOC (French label)					< 2			
Toluene	108-88-3			< 2	< 2	< 1		
Tetrachloroethylene	127-18-4			< 2	< 2	< 1		

The results are only valid for the tested sample(s).

This report may only be copied or reprinted in its entirety, parts of it only with a written acceptance by Eurofins.

	CAS No.	Retention time [min]	ID-Cat	Specific Conc. [µg/m³]	Toluene eq. [µg/m³]	Specific SER [µg/(m²·h)]	R <sub>D</sub>	R <sub>B</sub>
Ethylbenzene	100-41-4			< 2	< 2	< 1		
Xylene	1330-20-7			< 2	< 2	< 1		
Styrene	100-42-5			< 2	< 2	< 1		
2-Butoxyethanol	111-76-2			< 2	< 2	< 1		
1,2,4-Trimethylbenzene	95-63-6			< 2	< 2	< 1		
1,4-Dichlorobenzene	106-46-7			< 2	< 2	< 1		





The results are only valid for the tested sample(s).

This report may only be copied or reprinted in its entirety, parts of it only with a written acceptance by Eurofins.



## 6 Summary and Evaluation of the Results

### 6.1 Comparison with Limit Values of the French VOC Regulation

	CAS No.	Conc. 28 days $\mu\text{g}/\text{m}^3$	 $\mu\text{g}/\text{m}^3$	 $\mu\text{g}/\text{m}^3$	 $\mu\text{g}/\text{m}^3$	 $\mu\text{g}/\text{m}^3$
TVOC	-	< 2	>2000	<2000	<1500	<1000
Formaldehyde	50-00-0	< 3	>120	<120	<60	<10
Acetaldehyde	75-07-0	< 3	>400	<400	<300	<200
Toluene	108-88-3	< 2	>600	<600	<450	<300
Tetrachloroethylene	127-18-4	< 2	>500	<500	<350	<250
Ethylbenzene	100-41-4	< 2	>1500	<1500	<1000	<750
Xylene	1330-20-7	< 2	>400	<400	<300	<200
Styrene	100-42-5	< 2	>500	<500	<350	<250
2-Butoxyethanol	111-76-2	< 2	>2000	<2000	<1500	<1000
1,2,4-Trimethylbenzene	95-63-6	< 2	>2000	<2000	<1500	<1000
1,4-Dichlorobenzene	106-46-7	< 2	>120	<120	<90	<60

The product was assigned a VOC emission class without taking into account the measurement uncertainty associated with the result. As specified in French Decree no. 2011-321 of March 23 2011, correct assignment of the VOC emission class is the sole responsibility of the party responsible for distribution of the product in the French market.

### 6.2 Comparison with Limit Values of the CMR Components

CMR substances	CAS No.	Conc. 28 days $\mu\text{g}/\text{m}^3$	Max. allowed air concentration $\mu\text{g}/\text{m}^3$
Benzene	71-43-2	< 1	< 1
Trichloroethylene	79-01-6	< 1	< 1
Dibutylphthalate (DBP)*	84-74-2	< 1	< 1
Diethylhexylphthalate (DEHP)*	117-81-7	< 1	< 1

The results are only valid for the tested sample(s).

This report may only be copied or reprinted in its entirety, parts of it only with a written acceptance by Eurofins.

### 6.3 Comparison with VOC Limit Values of AgBB/ABG

Parameter	Test after 3 days		Test after 28 days	
	Concentration mg/m <sup>3</sup>	Limit Value mg/m <sup>3</sup>	Concentration mg/m <sup>3</sup>	Limit Value mg/m <sup>3</sup>
<b>TVOC</b>	0.015	≤ 10	< 0.005	≤ 1.0
<b>TSVOC</b>	0.010	-	< 0.005	≤ 0.1
<b>R-value (dimensionless)</b>	0.012	-	0	≤ 1
<b>Sum of VOC without NIK</b>	0.0097	-	< 0.005	≤ 0.1
<b>Formaldehyde</b>	-	-	< 0.003	≤ 0.1
<b>Total carcinogens</b>	< 0.001	≤ 0.01	< 0.001	≤ 0.001

Compliance with the limits alone does not replace an approval or voluntary documentation by a Technical Assessment Body according to the Construction Product Regulation. This requires an application and approval. See [www.eurofins.com/dibt-procedures](http://www.eurofins.com/dibt-procedures).

### 6.4 Comparison with Limit Values of the Belgian Regulation

Parameter	Test after 28 days	
	Concentration µg/m <sup>3</sup>	Limit Value µg/m <sup>3</sup>
<b>TVOC (EN 16516)</b>	< 5	≤ 1000
<b>TSVOC</b>	< 5	≤ 100
<b>R-value (dimensionless)</b>	0	≤ 1
<b>Total carcinogens</b>	< 1	≤ 1
<b>Toluene</b>	< 5	≤ 300
<b>Formaldehyde</b>	< 3	≤ 100
<b>Acetaldehyde</b>	< 3	≤ 200

### 6.5 Comparison with Limit Values of EN 717-1<sup>§</sup>

Parameter	Concentration mg/m <sup>3</sup>	E2 mg/m <sup>3</sup>	E1 mg/m <sup>3</sup>
<b>Formaldehyde 28 days</b>	< 0.003	> 0.10	≤ 0.10

The formaldehyde result is based on chamber testing and DNPH sampling according to ISO 16000. The result is therefore not directly according to the EN 717-1, and there are a few small deviations from EN 717-1 (see section on general deviations). The testing is in accordance with conclusions presented in CEN TC351 WG2 N174 where the difference and compatibility between EN 717-1 and ISO 16000 are empirically and theoretically analysed. For results close to the limit value it is recommended to perform an EN 717-1 test for verification.

## 6.6 Comparison with Limit Values of Indoor Air Comfort®

	Test after 3 days		Test after 28 days	
	Concentration µg/m <sup>3</sup>	Limit Value µg/m <sup>3</sup>	Concentration µg/m <sup>3</sup>	Limit Value µg/m <sup>3</sup>
<b>TVOC (EN 16516)</b>	16	≤ 10000	< 5	≤ 1000
<b>TSVOC</b>	10	-	< 5	≤ 100
<b>R<sub>D</sub>-value (NIK) (dimensionless)</b>	0.012	-	0	≤ 1
<b>R<sub>B</sub>-value (LCI) (dimensionless)</b>	0.012	-	0	≤ 1
<b>Sum of VOC without NIK/LCI</b>	9.7	-	< 5	≤ 100
<b>Total carcinogens</b>	< 1	≤ 10	-	-
<b>Any individual carcinogens</b>	-	-	< 1	≤ 1
<b>CMR substances</b>	-	-	< 1	≤ 1
<b>Formaldehyde</b>	< 3	-	< 3	≤ 60
<b>Acetaldehyde</b>	< 3	-	< 3	≤ 200
<b>French A+/A</b>	-	-	Complies	

Compliance with the limits alone does not entitle to use the Indoor Air Comfort label. This requires an application, site inspection, and approval. See [www.eurofins.com/iac-procedures](http://www.eurofins.com/iac-procedures).

## 6.7 Comparison with Limit Values of Indoor Air Comfort Gold®

	Test after 3 days		Test after 28 days	
	Concentration µg/m <sup>3</sup>	Limit Value µg/m <sup>3</sup>	Concentration µg/m <sup>3</sup>	Limit Value µg/m <sup>3</sup>
<b>TVOC (EN 16516)</b>	16	≤ 1000	< 5	≤ 60
<b>TSVOC</b>	10	-	< 5	≤ 20
<b>R<sub>D</sub>-value (NIK) (dimensionless)</b>	0.012	-	0	≤ 1
<b>R<sub>B</sub>-value (LCI) (dimensionless)</b>	0.012	-	0	≤ 1
<b>Sum of VOC without NIK/LCI</b>	9.7	-	< 5	≤ 40
<b>Total carcinogens</b>	< 1	≤ 10	-	-
<b>Any individual carcinogens</b>	-	-	< 1	≤ 1
<b>CMR substances</b>	-	-	< 1	≤ 1
<b>Formaldehyde</b>	< 3	-	< 3	≤ 10
<b>Acetaldehyde</b>	< 3	-	< 3	≤ 50
<b>Sum Formaldehyde + Acetaldehyde [ppb]</b>	< 5	≤ 50	-	-
<b>French A+</b>	-	-	Complies	

Compliance with the limits alone does not entitle to use the Indoor Air Comfort GOLD label. This requires an application, site inspection, and approval. See [www.eurofins.com/iac-procedures](http://www.eurofins.com/iac-procedures).

The results are only valid for the tested sample(s).

This report may only be copied or reprinted in its entirety, parts of it only with a written acceptance by Eurofins.

### 6.8 Comparison with BREEAM® NOR Limit Values

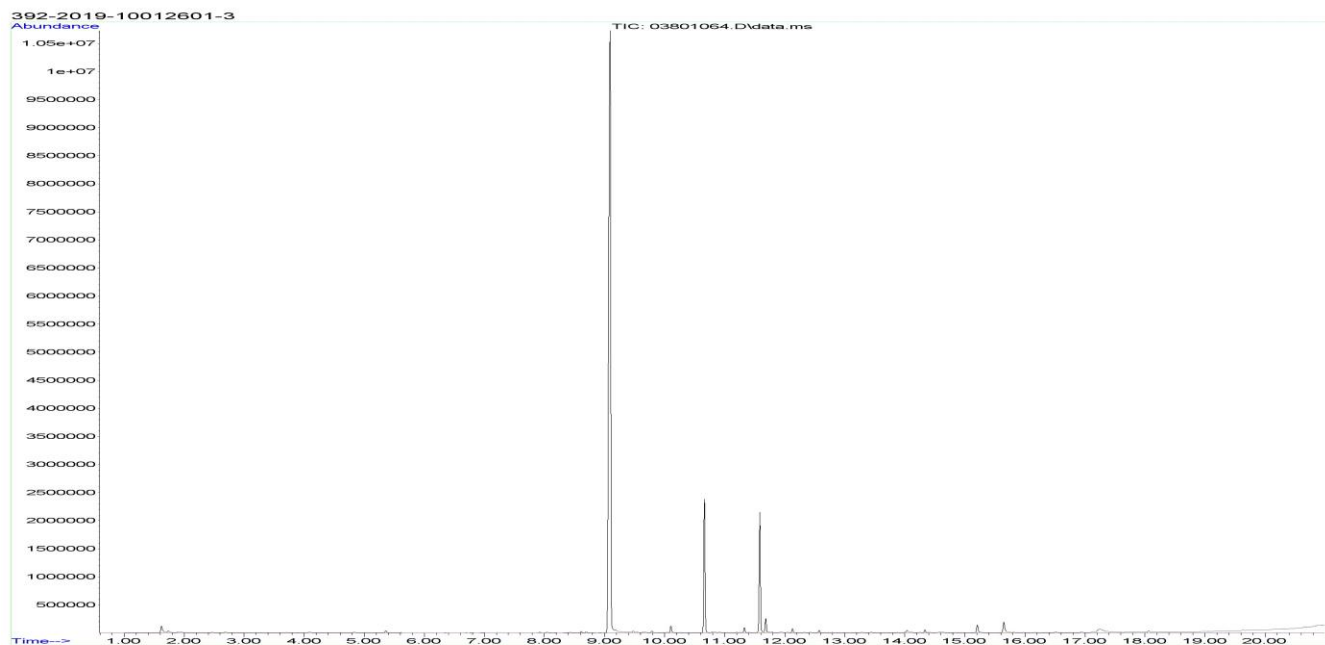
Parameter	Area specific emission rate $\mu\text{g}/(\text{m}^2\cdot\text{h})$	Limit Value $\mu\text{g}/(\text{m}^2\cdot\text{h})$
TVOC (EN 16516) 28 days	< 3	$\leq 200$
Total carcinogens	< 1	$\leq 5$
Formaldehyde 3 days	< 2	$\leq 24$
Formaldehyde 28 days	< 2	$\leq 50$

### 6.9 Comparison with Limit Values of LEED v4

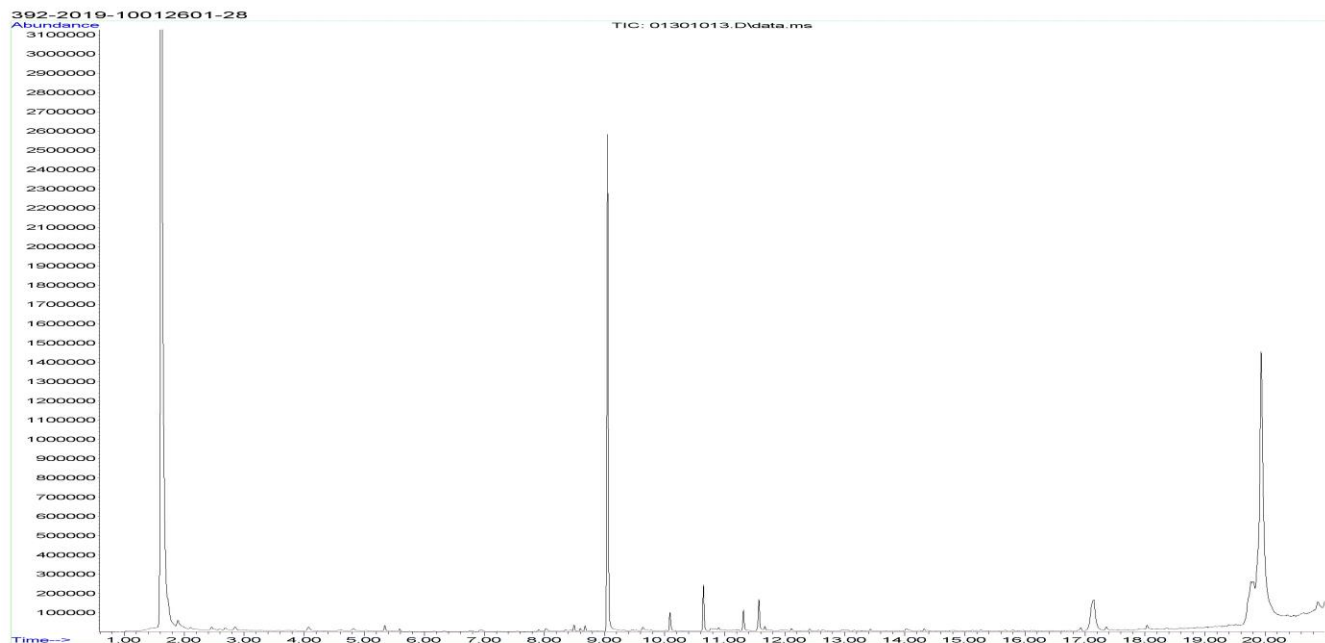
	Result	Not Compliant	Compliant
Indoor Air Comfort GOLD®	Pass	Fail	Pass

## 7 Appendices

### 7.1 Chromatogram of VOC Emissions after 3 Days



### 7.2 Chromatogram of VOC Emissions after 28 Days

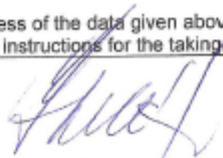



Please consider the different scales.

The results are only valid for the tested sample(s).

This report may only be copied or reprinted in its entity, parts of it only with a written acceptance by Eurofins.

### 7.3 Sampling Report

<b>Name of applicant:</b> (name, company, phone):	FIBERTEX Nonwovens a.s. Prumyslova 2179/20 SVITAVY CZ  + 420 461 573 211	<b>Producer</b> (if different from company's name at place of sampling):	FIBERTEX Nonwovens a.s. Prazska 42 SVITAVY CZ  + 420 461 573 111
<b>Production plant, where sampling takes place</b>	FIBERTEX Nonwovens a.s. Prazska 42 SVITAVY	<b>Sampler *</b>	FIBERACOUSTIC 450
		(Please mark): (name, company, phone):	
<b>Name of the product:</b>	FIBERACOUSTIC 450 Roll. 25190211218101	<b>Type of product</b>	Nonwovens
<b>Model / Program / Series:</b>		<b>Batch N°:</b>	WO243141
<b>Article N°:</b>		<b>Date of batch production:</b>	21-1-2019
<b>Sample was taken from</b>	<input type="checkbox"/> ongoing production <input checked="" type="checkbox"/> stocks <input type="checkbox"/> retained sample	<b>Date of sampling:</b>	21.1.2019
		<b>Time of sampling:</b>	
<b>Where had the product been stored prior to sampling?</b>	<input type="checkbox"/> production <input checked="" type="checkbox"/> store <input type="checkbox"/> miscellaneous	<b>How had the product been stored prior to sampling?</b>	<input type="checkbox"/> open <input type="checkbox"/> in the stack <input checked="" type="checkbox"/> wrapped up
<b>Place of storage:</b>	Prazska	<b>Packing material:</b>	Foil material
<b>Specifics</b> (possible negative influences by air contamination where sample was taken, by petrol emissions, by solvent emissions from production; any other uncertainties, questions, etc).			
Cut edges (identification of cut edges when present and identification of new surfaces and surface to be exposed in the emission test):			
<b>Confirmation</b>			
Herewith the signer confirms the correctness of the data given above. The sample was selected, drawn and packed personally in accordance with the instructions for the taking of samples.			
<b>Date:</b> 23.1.2019	<b>Signature:</b> (Stamp)	  <b>Fibertex</b> <small>NONWOVENS</small> Fibertex Nonwovens, a.s. Průmyslová 2179/20 CZ-568 02 Svitavy tel. +420 461 573 211 ⑥	

The results are only valid for the tested sample(s).

This report may only be copied or reprinted in its entity, parts of it only with a written acceptance by Eurofins.

## 7.4 How to Understand the Results

### 7.4.1 Acronyms Used in the Report

- < Means less than
- > Means bigger than
- \* Not a part of our accreditation
- ⌘ Please see section regarding uncertainty in the Appendices.
- § Deviation from method. Please see deviation section
- a The method is not optimal for very volatile compounds. For these substances smaller results and a higher measurement uncertainty cannot be ruled out.
- b The component originates from the wooden panels and is thus removed.
- c The results have been corrected by the emission from wooden panels.
- d Very polar organic compounds are not suitable for reliable quantification using tenax TA adsorbent and HP-5 GC column. A high degree of uncertainty must be expected.
- e The component may be overestimated due to contribution from the system  
SER Specific Emission Rate.

### 7.4.2 Explanation of ID Category

#### Categories of Identity:

- 1: Identified by comparison with a mass spectrum obtained from library and supported by other information and quantified through specific calibration.
- 2: Identified by comparison with a mass spectrum obtained from library and supported by other information. Quantified as toluene equivalent.
- 3: Identified with a lower match by comparison with a mass spectrum obtained from a library. Quantified as toluene equivalent.
- 4: Not identified, quantified as toluene equivalent.

## 7.5 Applied LCI and NIK Values

### 7.5.1 LCI/NIK Values for Compounds found after 3 Day Measurements

Compound	CAS No.	AgBB 2018 NIK [µg/m <sup>3</sup> ]	Belgian NIK [µg/m <sup>3</sup> ]
TXIB *	6846-50-0	450	450

### 7.5.2 LCI/NIK Values for Compounds found after 28 Day Measurements

Compound	CAS No.	AgBB 2018 NIK [µg/m <sup>3</sup> ]	Belgian NIK [µg/m <sup>3</sup> ]
None determined	-	-	-



## 7.6 Description of VOC Emission Test

### 7.6.1 Test Chamber

The test chamber is made of stainless steel. A multi-step air clean-up is performed before loading the chamber, and a blank check of the empty chamber is performed.

The chamber operation parameters are as described in the test method section. (EN 16516, ISO 16000-9, internal method no.: 71M549811).

### 7.6.2 Expression of the Test Results

All test results are calculated as specific emission rate, and as extrapolated air concentration in the European Reference Room (EN 16516, AgBB, EMICODE, M1 and Indoor Air Comfort).

### 7.6.3 Testing of Carcinogenic VOCs

The emission of carcinogens (EU Categories C1A and C1B, as per European law) is tested by drawing sample air from the test chamber outlet through Tenax TA tubes after the specified duration of storage in the ventilated test chamber. Analysis is performed by ATD-GC/MS (automated thermal desorption coupled with gas chromatography and mass spectroscopy using 30 m HP-5 (slightly polar) column with 0.25 mm ID and 0.25  $\mu$ m film, Agilent) (EN 16516, ISO 16000-6, internal methods no.: 71M549812 / 71M542808B).

All identified carcinogenic VOCs are listed; if a carcinogenic VOC is not listed then it has not been detected. Quantification is performed using the TIC signal and authentic response factors, or the relative response factors relative to toluene for the individual compounds.

This test only covers substances that can be adsorbed on Tenax TA and can be thermally desorbed. If other emissions occur, then these substances cannot be detected (or with limited reliability only).

### 7.6.4 Testing of VOC, SVOC and VVOC

The emissions of volatile organic compounds are tested by drawing sample air from the test chamber outlet through Tenax TA tubes after the specified duration of storage in the ventilated test chamber. Analysis is performed by ATD-GC/MS using HP-5 column (30 m, 0.25mm ID, 0.25 $\mu$ m film) (EN 16516, ISO 16000-6, internal methods no.: 71M549812 / 71M542808B).

All single substances that are listed with a LCI/NIK value in the latest publications (hereafter referred to as target compounds) are identified if present. All other appearing VOCs are identified as far as possible. Quantification of target compounds is done using the TIC signal and authentic response factors, or the relative response factors relative to toluene. For certain compound groups, which differ significantly in chemistry from toluene, quantification is performed relative to a representative member of the group for more accurate and precise results. This can include quantification of for example glycols and acids. In addition to that, all results are also expressed in toluene equivalents. All non-target compounds, as well as all non-identified substances, are quantified in toluene equivalents.

The results of the individual substances are calculated in three groups depending on their retention time when analyzing using a non-polar column (HP-5):

- Volatile Organic Compounds (VOC) are defined as: All substances eluting between and including n-hexane (n-C6) and n-hexadecane (n-C16)
- Semi-Volatile Organic Compounds (SVOC) are defined as: All substances eluting after n-hexadecane (n-C16) and before and including n-docosane (n-C22)
- Very Volatile Organic Compounds (VVOC) are defined as: All substances eluting before n-hexane (n-C6).

Total Volatile Organic Compounds (TVOC) is calculated by summation of all individual VOCs with a concentration  $\geq 5 \mu\text{g}/\text{m}^3$ . The TVOC can be expressed either in toluene equivalents as defined in EN 16516 and similar to ISO 16000-6, or as the sum of concentrations using specific or relative response factors. In the case of summation of concentrations using authentic or relative response factors, the toluene equivalent is applied to all non-target and non-identified VOCs before summing up. Compounds regarded as VOC in line with the above definition but elute before n-C6 or after n-C16 on the HP-5 column are treated as VOC, and are thus added to the TVOC.

Total Semi-Volatile Organic Compounds (TSVOC) is calculated by the summation of all individual SVOCs expressed in toluene equivalents with a concentration  $\geq 5 \mu\text{g}/\text{m}^3$ , as defined in EN 16516. VOCs that are regarded as VOC in line with the above definition, but elute after n-C16 in this test, are not added to the TSVOC.

Total Very Volatile Organic Compounds (TVVOC) is calculated by the summation of all individual VVOCs with a concentration  $\geq 5 \mu\text{g}/\text{m}^3$  and expressed in toluene equivalents. VOCs that are regarded as VOC in line with the above definition, but elute before n-C6 in this test, are not added to the TVVOC.

This test only covers substances which can be adsorbed on Tenax TA and can be thermally desorbed. If emissions of substances outside these specifications occur then these substances cannot be detected (or with limited reliability only).

#### 7.6.5 Calculation of R Values with LCI Lists

The concentrations of detected compounds  $\geq 5 \mu\text{g}/\text{m}^3$  are divided by their respective LCI/NIK value (if defined in the given publication). The sum of the quotients gives the R value, which can be mathematically expressed:

$$R = \sum_i^n \left( \frac{c_i}{\text{NIK}_i} + \dots + \frac{c_n}{\text{NIK}_n} \right)$$

This R value is calculated, depending on the purpose of this test, for the European LCI list, for the German LCI/NIK list ( $R_D$ ), and/or for the Belgian LCI list ( $R_B$ ).

All VOCs without published LCI/NIK value and concentration  $\geq 5 \mu\text{g}/\text{m}^3$  are summed up as sum of VOCs without LCI/NIK if required by the standard or protocol.

#### 7.6.6 Testing of Aldehydes

The presence of aldehydes is tested by drawing air samples from the test chamber outlet through DNPH-coated silicagel tubes after the specified duration of storage in the ventilated test chamber. Analysis is performed by solvent desorption and subsequently by HPLC and UV-/diode array detection.

The absence of formaldehyde and other aldehydes is stated if UV detector response at the specific wavelength is lacking at the specific retention time in the chromatogram. Otherwise it is checked whether the reporting limit is exceeded. In this case the identity is finally checked by comparing full scan sample UV spectra with full scan standard UV spectra.

#### 7.6.7 Testing of Phthalates

The presence of phthalates is tested by drawing air samples from the test chamber outlet through tube with XAD-II adsorbent after the specified duration of storage in the ventilated test chamber. Analysis is performed by solvent desorption and subsequently by GC/MS. Analysis of phthalates is not currently covered by the accreditation (Internal methods no.: 71M549812 / 71M546060).

## 7.7 Quality Assurance

Before loading the test chamber, a blank check of the empty chamber is performed and compliance with background concentrations in accordance with EN 16516 / ISO 16000-9 is determined.

Air sampling at the chamber outlet and subsequent analysis is performed in duplicate. Relative humidity, temperature and air change rate in the chambers is logged every 5 minutes and checked daily. A double determination is performed on random samples at a regular interval and results are registered in a control chart to ensure the uncertainty and reproducibility of the method.

The stability of the analytical system is checked by a general function test of device and column, and by use of control charts for monitoring the response of individual substances prior to each analytical sequence.

## 7.8 Accreditation

The testing methods described above are accredited on line with EN ISO/IEC 17025 by DANAK (no. 522). This accreditation is valid worldwide due to mutual approvals of the national accreditation bodies (ILAC/IAF, see also [www.eurofins.com/galten.aspx#accreditation](http://www.eurofins.com/galten.aspx#accreditation)).

Not all parameters are covered by this accreditation. The accreditation does not cover parameters marked with an asterisk (\*), however analysis of these parameters is conducted at the same level of quality as for the accredited parameters.

## 7.9 Uncertainty of the Test Method

The relative standard deviation of the overall analysis is 22%. The expanded uncertainty  $U_m$  equals 2 x RSD. For further information please visit [www.eurofins.dk/uncertainty](http://www.eurofins.dk/uncertainty).